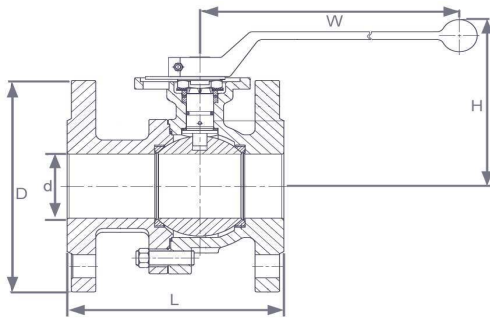


## JV090027

**Carbon Steel  
Fire Safe  
Ball Valve  
ISO 5211 Mount  
c/w Operating Lever  
Flanged  
PN16/40**



A high performance Carbon Steel bodied full bore Ball Valve suitable for various heavy duty applications and is Fire Safe to API 607.

The quarter turn operation in conjunction with the TFM seats provides fast positive isolation.

These valves may be locked in the open or closed position when fitted with a lever.

These valves can be supplied with electric, pneumatic, hydraulic and gearbox actuation.

### Approvals, Features & Benefits

- Face to face: DIN3202-PART1-F4/F5
- Fire Safe approved acc. to API 607
- ATEX approved
- DNV certified
- NACE MR0175
- ISO 5211 direct mounting pad
- Lockable device when lever is fitted
- Full bore

### Pressure & Temperature

Pressure range :-  
DN15 - 50 : PN40 rated  
DN65 - 250 : PN16 rated  
(Max. 12 bar for steam)

Temperature range\*:-  
-20°C to 200°C

\* Dependent on pressure,  
Suitable for saturated steam up to 12 bar

DN	15	20	25	32	40	50	65	80	100	125	150	200	250
L	115	120	125	130	140	150	170	180	190	325	350	400	450
H	87	90.5	92.4	106.9	121.9	129.9	155.8	162.3	190.9	232	253	320.5	355
W	190	190	190	190	235	235	325	325	325	708	708	920	1061
d	15	20	24	30	38	50	64	76	98	125	150	200	250
D	95	105	115	140	150	165	185	200	220	250	285	340	405
ISO 5211	F03/04	F03/04	F04/05	F04/05	F05/07	F05/07	F07/10	F07/10	F10/12	F10/12	F10/12	F14	F14
Stem	9x9	9x9	11x11	11x11	14x14	14x14	17x17	17x17	22x22	27x27	27x27	36x36	36x36
Torque (Nm)*	7.75	10	15.63	17.5	30.63	40	47.5	56.25	68.75	276.25	438.75	617.5	937.50
Flange	PN40	PN40	PN40	PN40	PN40	PN40	PN16	PN16	PN16	PN16	PN16	PN16	PN16
Weight Kg	2.3	2.9	3.9	5.5	7.3	10.0	15.3	19.4	25.7	43.0	67.0	104.0	180.0

\* Torque calculated at zero pressure includes 25% safety, add 25% for dry duty.

### MATERIALS

Body	Carbon Steel (1.0619)
Ball	Stainless Steel (CFM8)
O-ring	Viton
Seats	TFM1600
Stem	Stainless Steel (316)